



Planning,
Industry &
Environment

Issued under the Environmental Planning and Assessment Act 1979

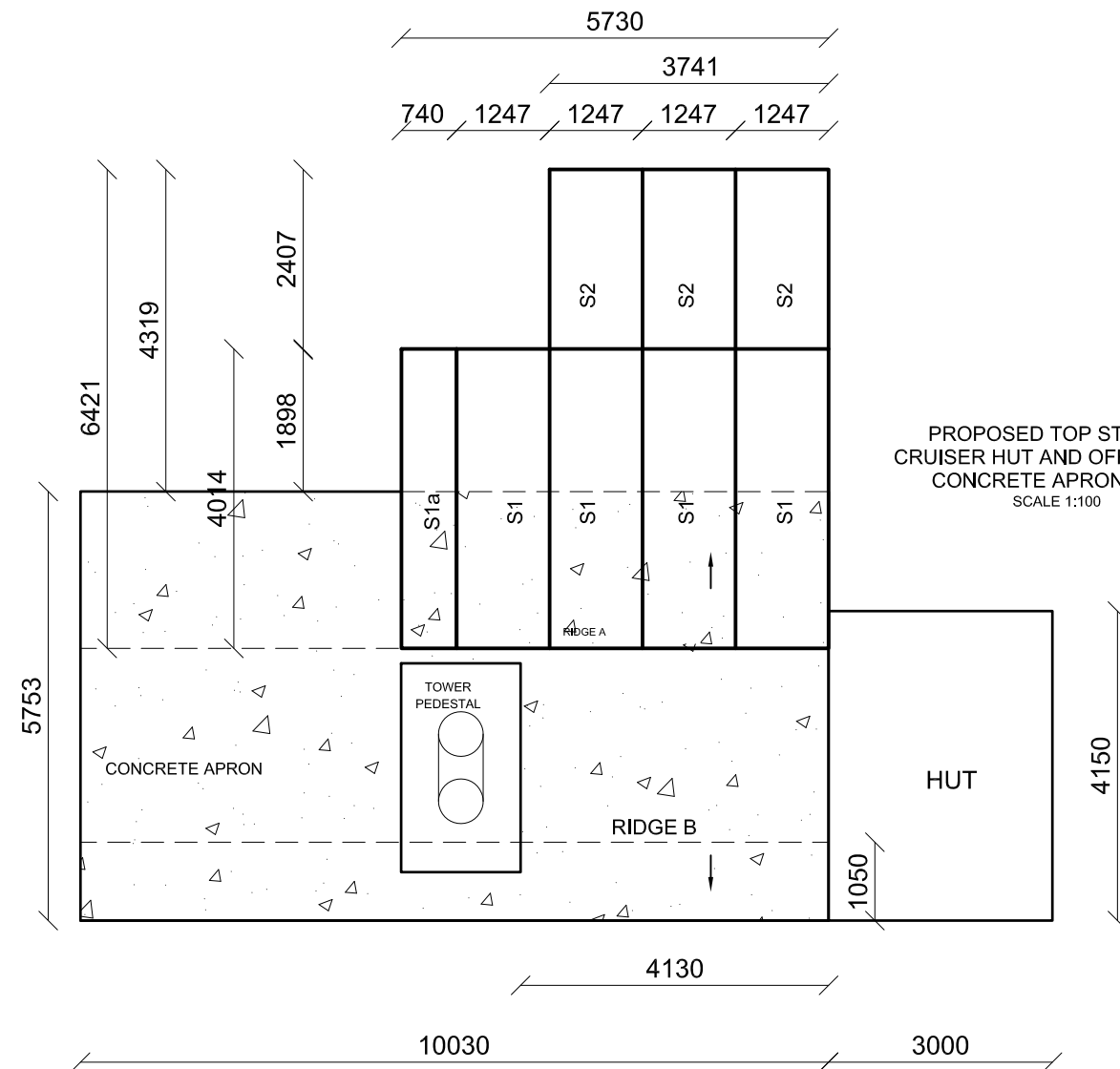
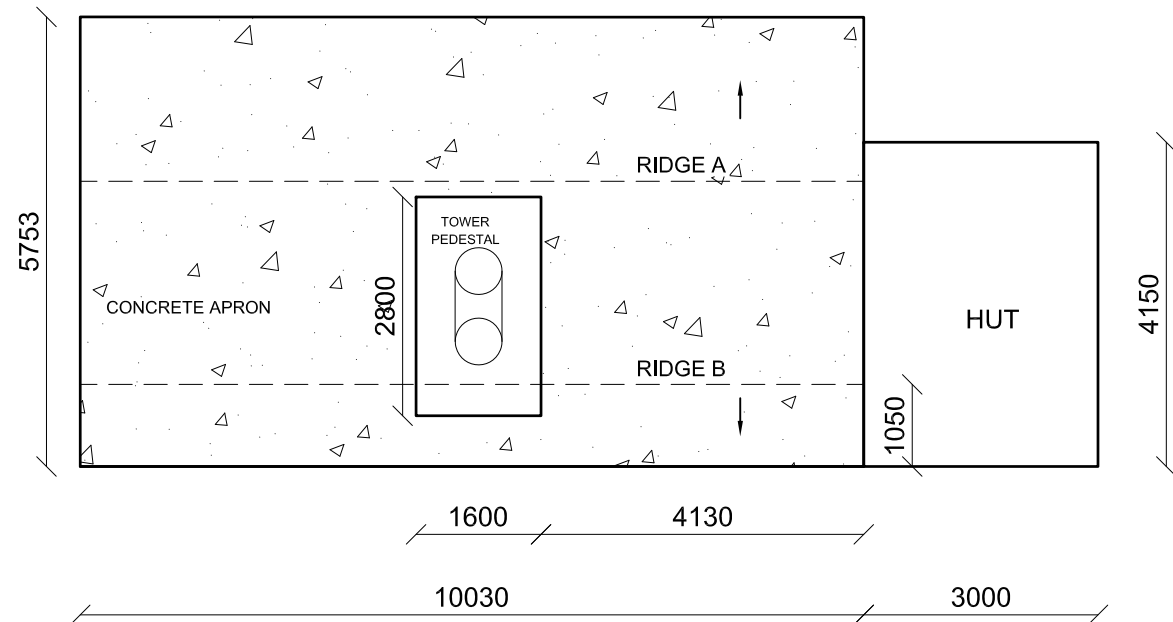
Approved Application No DA 21/13831

Granted on the 27 January 2022

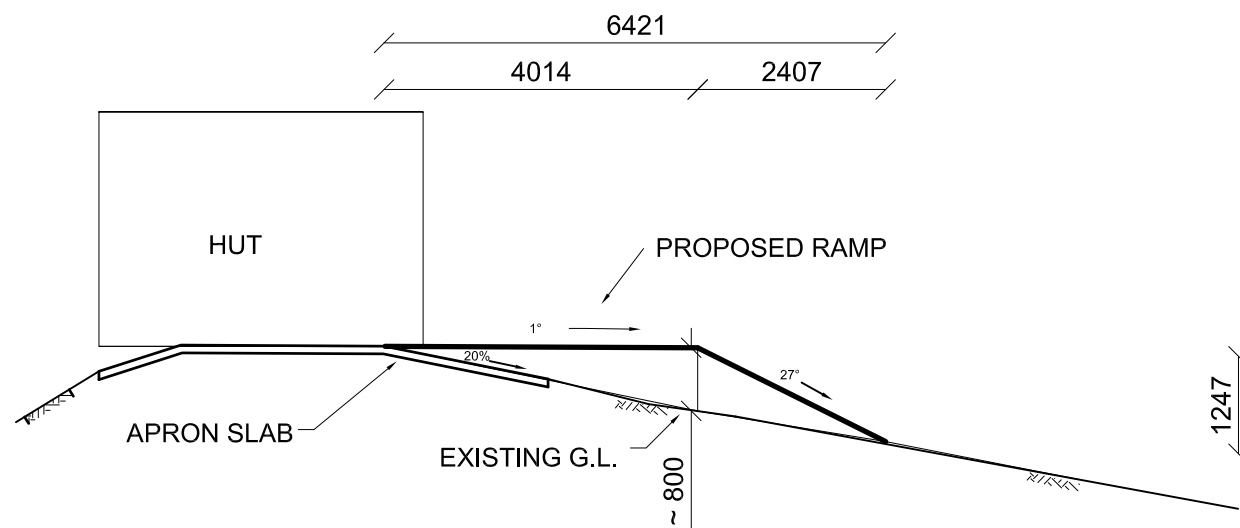
Signed Mark Brown

Sheet No 5 of 9

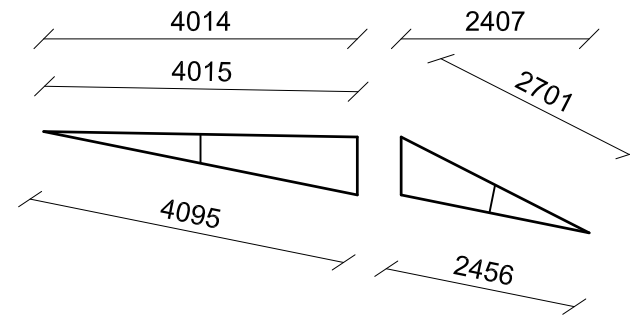
EXISTING TOP STATION
CRUISER HUT AND OFFLOADING
CONCRETE APRON SLAB
SCALE 1:100



PROPOSED TOP STATION
CRUISER HUT AND OFFLOADING
CONCRETE APRON SLAB
SCALE 1:100

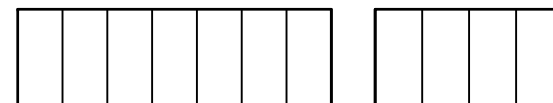


LONG SECTION - PROPOSED RAMP
SCALE 1:100



FOUR SEGMENTS S1: - 1,247 WIDE
& ONE SEGMENT S1a - 740 WIDE

THREE SEGMENTS S2:- 1,247 WIDE



PREFAB RAMP SPECIFICATIONS FOR
4 KPa LOADING
SCALE 1:100

- * MAIN STRUCTURAL BEARERS - 65 x 35 x 2.5 RHS or 50 x 50 x 2.0 SHS
- * CROSS MEMBERS - JOISTS @ 570 CRS - SUPPORTING MARINE PLY OF FORM PLY OR EQUIVALENT - SAME AS BEARERS - FULLY WELDED TO BEARERS
- * VERTICAL PROP REDUCING THE SPAN OF THE RAMP - 40 x 40 x 2.0 or 50 x 50 x 4.0 EQUAL ANGLE FULLY WELDED OT BEARERS
- * SEGMENT S1 TO BE BOLTED TO SEGMENT S2 WITH MINIMUM 6 M10 HORIZONTAL BOLTS THROUGH 6 mm LUGS
- * PIN SEGMENTS TO EARTH WITH STAR PICKETS OR EQUIVALENT THROUGH PREWELDED LUGS. SECURE SEGMENTS TO EXISTING CONCRETE APRON SLABS WITH M10 ANKA SCREWS OR EQUIVALENT. PROVIDE MINIMUM 6 ANCHOR POINTS TO GROUND FOR SEGMENT S1 AND MINIMUM 4 ANCHOR POINTS FOR SEGMENT S2.
- * FINAL DIMENSIONS AND MINIMUM EARTHWORKS TO BE CONFIRMED ON SITE

PRACTICAL ENGINEERING
SOLUTIONS P/L
ABN 67 157 931 069
**Structural &
Project Management ENGINEERS**

48 Denison Street
Cooma NSW 2630
www.practicalengineers.com.au

M: 0402 15 22 16

office@practicalengineers.com.au

Drawing Name:
ENGINEERING REPORT ON
PROPOSED MOUNTAIN
BIKE OFF LOAD
EXTENSION AT CRUIER
TOP STATION
AT THREDBO NSW

Client:
KOSCIUSZKO THREDBO P/L
C/- PETER FLEMING -
MOUNTAIN MANAGER
THREDBO NSW 2627

Structural Sheet No. S01 of 1

Scale: 1:100

Date: 21.06.2021

Drawing No: 20210514A

PLAN AND DETAILS

Sheet Size:- A3

Designed: O Boaru

Drawn: O Boaru

Checked: O Boaru

Approved:



Ovi Boaru MIEAust CPEng

ISSUE DATE AMENDMENT

ISSUE	DATE	AMENDMENT
-	-	-

This document is Copyright and shall not be copied without written approval, nor shall it be used except for the Development and the Site Specified.

All workmanship and materials to conform with latest edition of the Building Code of Australia and relevant Australian Standards.

The contractor is to confirm all dimensions prior to commencing any works on site.

Refer to specification for other relevant information details.